

ELANCO*

Extinosad[®]
Pour-On for Sheep



**LICE CONTROL IN SHEEP IS NOW
DEAD FAST. DEAD EASY.**



Body lice

DEAD FA

Kills lice within hours

Some pour-ons can take weeks to work, while resistance has rendered others ineffective. New Extinosad® Pour-On from Elanco doesn't inhibit the growth of adult lice and nymphs . . . *it kills them outright!*

Despite its deadly activity against lice, Extinosad Pour-On poses remarkably little risk to humans, livestock or the environment when used in accordance with the label directions. It can be applied safely to all classes of sheep, including lambs.

Ideal for off-shears

Extinosad Pour-On is ideal for off-shears lice control. Its unique mode of action kills lice within hours and provides a much-needed alternative to insect growth regulator (IGR) compounds, to which resistance has been identified.¹

ST



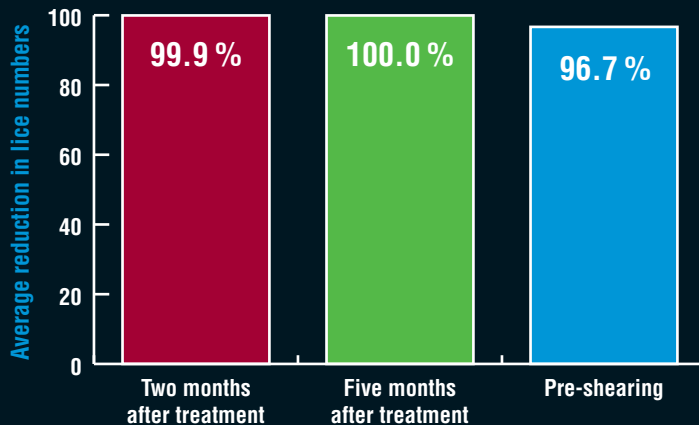
Off-shears

Extinosad Pour-On dead fast and lice control and in lo

Rapid, effective control

In four large-scale trials involving Merino wethers, ewes and rams, lice were undetectable in sheep five months after treatment with Extinosad Pour-On off-shears.²

Efficacy of Extinosad Pour-On when applied off-shears²



Average of four trials conducted at Tooraweenah, NSW; Dalveen, Queensland; and Elaine, Victoria (2).

**Pour-On delivers
and dead easy
, off-shears
ng wool.**



Resistant lice

DE

Controls resistant lice

Extinosad Pour-On contains the revolutionary active ingredient, spinosad, which is chemically unrelated to any other pour-on lousicide used in the Australian sheep and wool industry. Its unique mode of action controls lice strains that are resistant to insect growth regulator (IGR) and synthetic pyrethroid (SP) compounds.³

Lice control in long wool

Extinosad Pour-On is the most effective pour-on treatment available to kill lice in sheep with long wool. It kills lice within hours, including those strains resistant to synthetic pyrethroid (SP) compounds (e.g. Vanquish[†]) *and has no wool or meat withholding periods.*

AD EASY

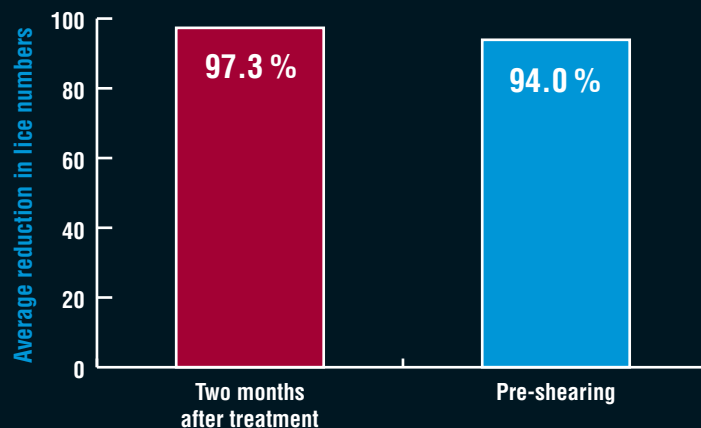


Long wool

The most effective solution

Extinosad Pour-On delivers excellent control of lice in sheep with long wool. Seven Australian field trials found Extinosad Pour-On reduced lice numbers in long wool sheep by an average of 97.3% two months after treatment!²

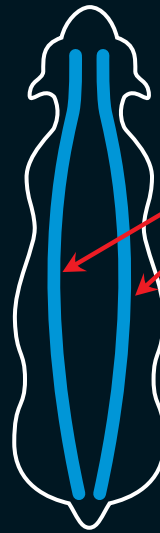
Efficacy of Extinosad Pour-On when applied to sheep with long wool²



Average of seven trials conducted at Uralla, Grenfell and Jindera, NSW; Yelarbon and Hannaford, Queensland; Raywood, Victoria; and Nungarin, WA.

Application guidelines

Extinosad Pour-On must be applied using the special manual applicator or a powered applicator fitted with a modified t-bar nozzle. Halve the dose volume and apply as two bands approximately 5 cm from the backline on each side of the animal (see diagram). Apply each band evenly from the poll to the base of the tail. Confine treated sheep in the yards for a short time to improve the spread of Extinosad Pour-On around the body via rubbing and/or physical contact with other sheep.



Apply in two bands, approximately 5 cm from the mid-point of the back line on each side.

Getting the best results

- Treat all sheep on the property at the same time.
- Muster each paddock thoroughly to ensure all sheep are treated.
- Check boundary fences to ensure treated sheep are contained and to prevent untreated or lice-infested sheep from joining treated mobs.
- Do not mix treated sheep with untreated sheep, infested sheep or those of unknown lice status.
- Do not use on sheep with lumpy wool.
- Sheep that require treatment with a long wool lousicide should be re-treated after shearing.
- Moderate rainfall occurring after treatment will not adversely affect lice control provided by Extinosad Pour-On.

Always read the label directions before use.

Dosage

Sheep Category	Bodyweight (kg)	Dose (mL)	Number of sheep treated per 20 L pack
Off-shears	20–35	15	1333
	36–55	20	1000
	56–75	25	800
	Add 2 mL for each 5 kg above 75 kg		
Suckling lambs (unshorn)	Up to 9	5	4000
	10–19	7.5	2666
	20–29	15	1333
	Add 3.5 mL for each 5 kg above 29 kg		
Long wool (6–12 months after shearing)	Adult (> 6 months old)	50	400

Withholding periods

Wool: NIL

Meat – Off-shears: 14 days

Meat – Suckling lambs: 14 days

Meat – Long wool: NIL

Milk: Do not use on ewes producing milk products now or in the future for human consumption.

An Export Slaughter Interval for this product has been determined. As the requirements of different export markets can change, always contact Elanco or visit www.apvma.gov.au before using this product on sheep destined for export.

Extinosad Pour-On for Sheep delivers dead fast and dead easy lice control.

- Off-shears or long wool
- Kills SP and IGR resistant strains³
- Kills lice within hours
- Nil wool withholding period
- Unique mode of action
- Ideal for rotation programs
- Ready-to-use formulation

For more information, contact Elanco
on 1800 226 324 or visit www.elanco.com.au

ELANCOTM